

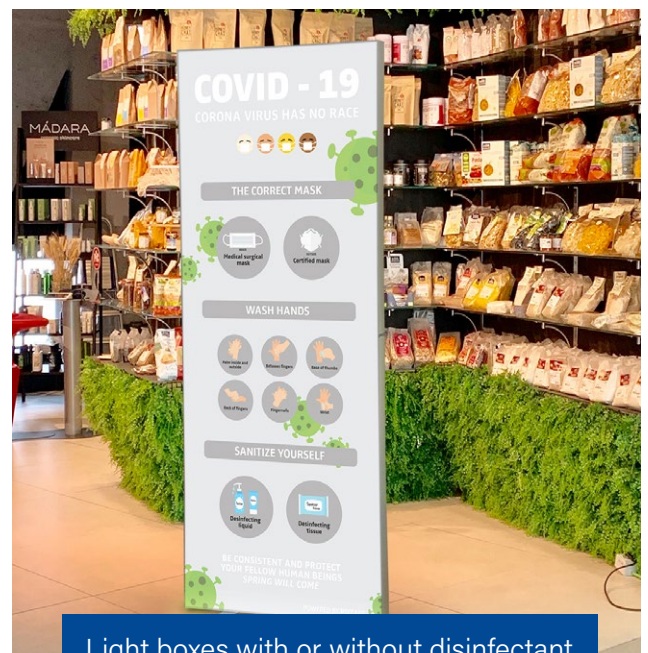
GUIDELINES ON HYGIENE RULES - DO YOU NEED ASSISTANCE?

Ladies and gentlemen,

Supermarkets are always open despite Corona-19, and have been able to gain experience with hygiene measures for some time. Nevertheless, it is still a challenge for many retail companies to implement the measures in an easy, straight-forward manner. The protection of each individual, against infection, remains a priority and therefore certain rules and guidelines need to be observed. Recommended measures include; protective and partition walls in the checkout area, to ensure a certain distance between customers, and hygiene protection masks - which are already mandatory in many countries. These aids minimise the transmission of infected droplets and at the same time, serve to increase the feeling of safety for customers and employees.

With the above in mind, we at **berger**textiles have discussed this with our partners and created a **berger**textiles #WeCare platform as a unified network. Here we present solutions that some of our partners are already implementing with **berger**textiles materials. Currently, some key applications are; disinfection stations, partition walls, information signs and makeshift mouth-nose masks.

We will show you examples of how you can equip your retail outlets to comply with strict hygiene regulations. At the same time, you can advertise products or achieve a high level of attention for important information.



Light boxes with or without disinfectant dispensers ensure maximum attention.

We are happy to establish contacts with our customers who manufacture the corresponding products.
 We wish you good luck and health in mastering the difficult Covid-19 situation. Stay healthy.

Your **berger**textiles team



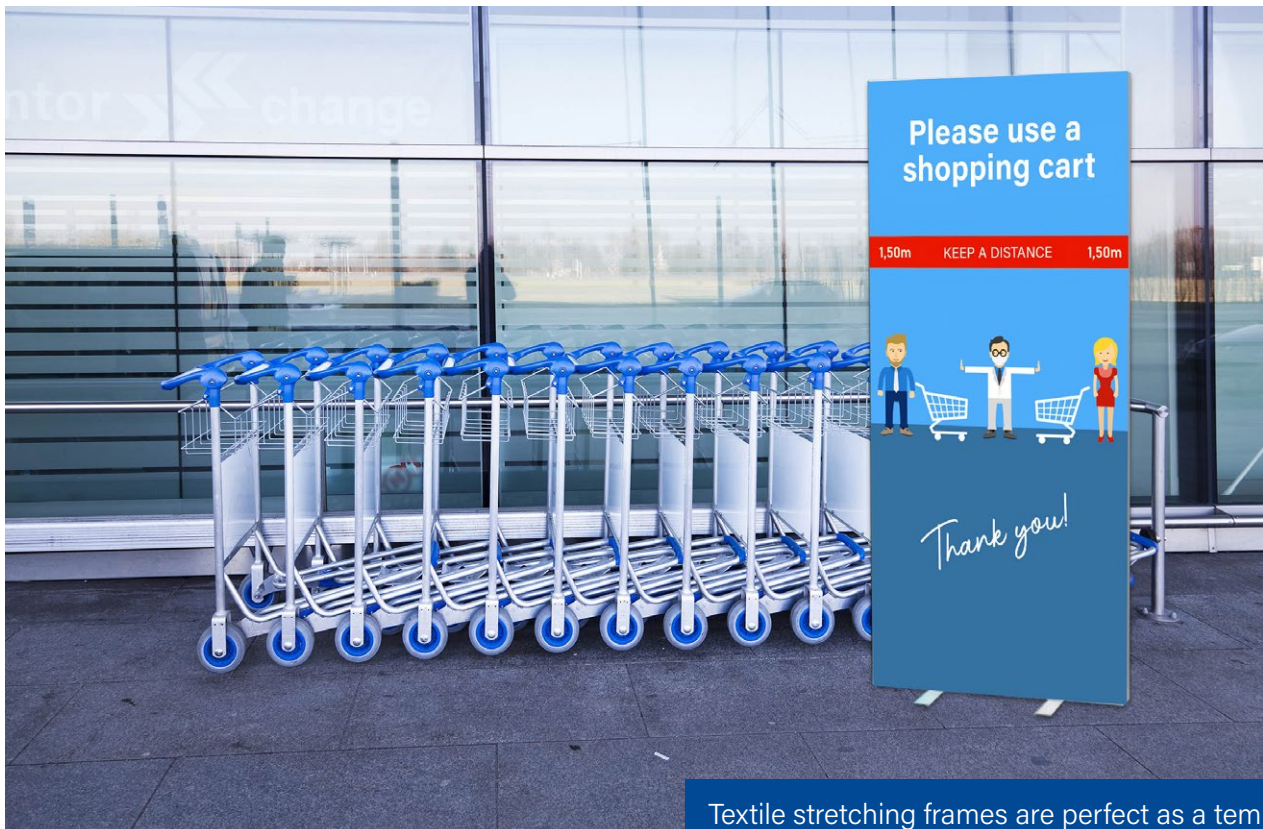
+49 2151 387 6700



wecare@bergertextiles.com



www.bergertextiles.com/wecare/



Textile stretching frames are perfect as a temporary measure to communicate important information

#WECARE

We are already working successfully with these partners:

